

COLLEGE CREDIT PLUS



SINCLAIR
COLLEGE



WHAT IS COLLEGE CREDIT PLUS?

College Credit Plus (CCP) gives students in grades 7-12 the opportunity to enroll in college courses and earn high school and college credit before graduating high school.

BENEFITS FOR STUDENTS & THEIR FAMILIES

- Earn high school and college credit for your classes
- Provide **free rigorous college courses** for college-ready students
- Get a head start by earning college credits that you can use to finish a **credential at Sinclair or transfer** to another college/university
- Reduce the **time and cost** to earning college credit
- Opportunity to complete college coursework within a strong and familiar **support system**
- CCP courses are given the same **grade weight** as AP/IB and other advanced standing courses on the high school transcript



AM I ELIGIBLE TO PARTICIPATE?

All Ohio public schools and colleges/universities are required to participate in CCP. Every student, in grades 7–12, will have the chance to apply. Students must meet one of the following requirements for each of the subject areas to show that they are academically ready for college courses:

English & Social Sciences

- An ACT score of 18 in English or SAT score \geq 480 in English, OR
- Score college-ready on Sinclair's ACCUPLACER placement test in English.

Math & Science

- An ACT score of 22 in Math or SAT score \geq 530 in Math, OR
- Score college-ready on Sinclair's ALEKs placement test in Math.

****Students who have Assessment scores below college-ready, but within a specific Standard Error of Measure (SEM), may qualify with a 3.0 cumulative GPA or high school recommendation. See your CCP Coordinator for more information.****

WHICH CLASSES CAN I TAKE?

Students are eligible to take classes under CCP with the following conditions:

- Student must demonstrate that they are college-ready and have met the college course prerequisites.
- Students are eligible to enroll in a maximum of 30 credit hours annually. Eligible hours are determined by the high school for public school students and by the state for non-public or homeschooled students.
- Students can take courses during Summer, Fall, or Spring terms. Summer Semester is the first term of the academic year.
- Students must complete 15 credit hours in Level I courses before progressing to Level II courses.
- Courses must apply towards a degree or certificate program.
- Under CCP, a 3-credit hour or more college course = 1 high school Carnegie Unit.

Please visit www.sinclair.edu/ccp-course-eligibility for a list of eligible and non-allowable courses.

WHAT CAN I DO WITH MY COLLEGE CREDITS?

CCP courses and grades become a permanent part of your college transcript. You can use your CCP college credits to **continue your education** at Sinclair to complete a certificate or associate degree program.

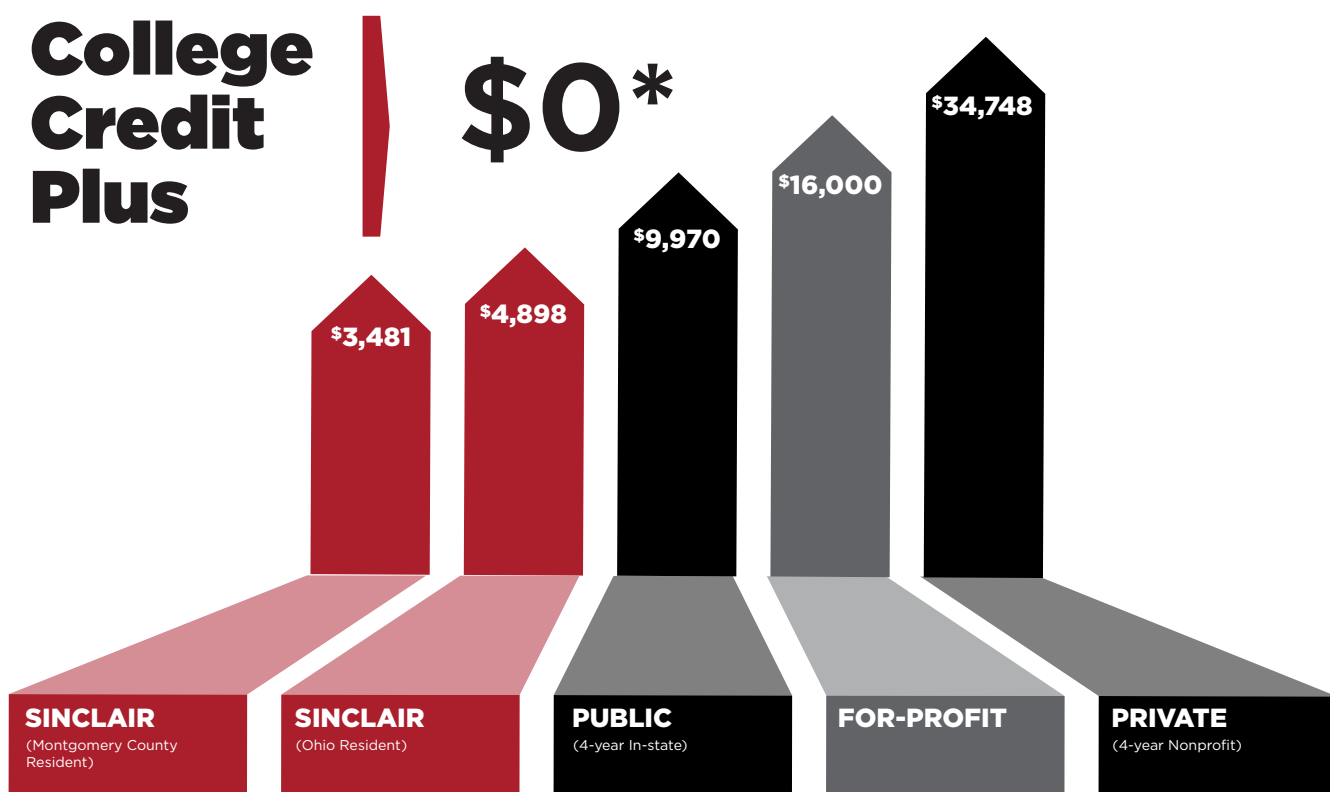
You can also **use your credits to transfer** to another college or university to **complete your degree**. Most Sinclair credits transfer easily to other public Ohio colleges and universities. You should check with the college or university you plan to attend for specific information on transferring credits.

This means that you will:

- Spend **less time in college** to get your degree
- **Save money** by taking your general education classes early

AVERAGE PUBLISHED TUITION COSTS FOR FULL-TIME UNDERGRADUATES, 2019

BASED ON 30 CREDIT HOURS PER YEAR



*Public school student's tuition and books are paid by school district. Homeschool and Non-Public school students may have out of pocket costs based on state funding availability. (NOTE: These amounts do NOT include room and board fees incurred at typical four-year schools.) SOURCE: The College Board, Annual Survey of Colleges

WWW.SINCLAIR.EDU/CCP



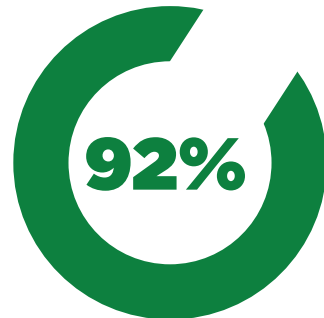


CURRICULUM

The Sinclair Academic Pathways are designed to guide students to choose courses within an academic program. High School students often know which career area they are interested in, but have not yet declared a major. These pathways will align students within an academic division, but not a specific major. After a CCP student completes 12 credit hours, they will need to meet with an academic advisor to declare a major. Declaring a major will help prevent the loss of credits when pursuing an associate's and/or bachelor's degree. Students may contact academic advising to schedule an appointment at 937-512-3700 or visit their website, www.sinclair.edu/academic-advising

Be sure to meet with your high school guidance counselor to determine your graduation requirements

Over **46,000** college credit hours earned.



92% of CCP students receive **passing grades** and **earn college credit**.

MOST CCP STUDENTS TAKE BETWEEN 1 AND 3 COLLEGE COURSES



EACH SEMESTER



ACADEMIC PATHWAYS

Understanding Pathway Options

Career Pathway

- Designed for students planning to obtain an associate's degree at Sinclair.
- Upon earning their degree, students can enter straight into the workforce.
- The earned credential provides students with necessary skills to obtain employment.
- Often completed within two years of full time enrollment.

Transfer Pathway

- Designed for students planning to obtain a bachelor's degree.
- Courses within the pathways align with specific programs at four-year universities.
- All transfer programs include Ohio Transfer Module (OTM) or Transfer Assurance Guide (TAG) Courses.
 - OTM and TAG courses guarantee transfer to all Ohio public colleges.
- Students who plan to transfer out of the state of Ohio or to a private institution should also work closely with the receiving institution to assure accurate course selection.

Top CCP Courses & Sequence Offerings:

- English Composition I & II (ENG 1101 & ENG 1201)
- Western Civilization I & II (HIS 1111 & HIS 1112)
- General Psychology (PSY 1100)
- Introduction to Sociology (SOC 1101)
- Effective Public Speaking (COM 2211)
- American Federal Government (PLS 1120)
- College Algebra (MAT 1470)

*****Students interested in choosing a pathway, may contact academic advising to schedule an appointment at 937-512-3700 or visit their website, www.sinclair.edu/academic-advising*****

LIBERAL ARTS Associate in Arts

University Parallel

The Associate of Arts Pathway is designed for students who are planning to transfer to a four-year college or university in a variety of majors. Examples of possible majors include Sociology, Psychology, History, Education and Foreign Languages. Transferring students can select specific electives based on the requirements of their intended major at the receiving institution. Students should communicate with the receiving institution early into their educational program and are required to work with an academic advisor to select appropriate courses.

ASSOCIATE IN ARTS TRANSFER PATHWAY

FIRST SEMESTER

Course Number	Course Name	Credit Hours
BIO 1111/1117	General Biology I	4
ENG 1101	English Composition I	3
MAT 1470 OR MAT 1450	College Algebra* OR Introductory Statistics*	3 OR 4
PLS 1120	American Federal Government	3
Total		13/14

* See Academic Advisor for appropriate course selection

SECOND SEMESTER

Course Number	Course Name	Credit Hours
BIO 1211/1217	General Biology II	4
COM 2211	Effective Public Speaking	3
ENG 1201	English	3
HIS 1112	Western Civilization II	3
PSY 1100	General Psychology	3
Total		16

LIBERAL ARTS Associate in Science

University Parallel

The Associate of Science Pathway is designed for students who are planning to transfer to a four-year college or university and pursue baccalaureate degree programs such as Biology, Chemistry, Geology, Mathematics, Physics and Pre-professional programs, i.e. Medicine, Pharmacy, etc. Transferring students can select specific electives based on the requirements of their intended major at the receiving institution. Students should communicate with the receiving institution early into their educational program and are required to work with an academic advisor to select appropriate courses.

ASSOCIATE IN SCIENCE TRANSFER PATHWAY

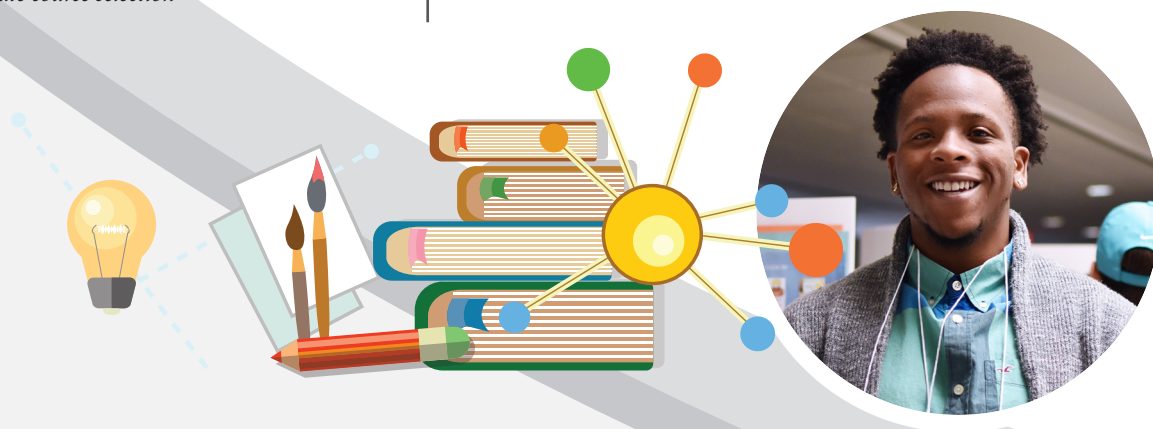
FIRST SEMESTER

Course Number	Course Name	Credit Hours
ENG 1101	English Composition I	3
BIO 1171 OR CHE 1211/1251	Principles of Biology I* (Fall Only) OR General Chemistry I*	5
PSY 1100	Introduction to Psychology	3
HIS 1112	Western Civilization II	3
Total		14

* See Academic Advisor for appropriate course selection

SECOND SEMESTER

Course Number	Course Name	Credit Hours
ENG 1201	English Composition II	3
BIO 1272 CHE 1221/1261	Principles of Biology II* (Spring Only) General Chemistry II*	5
MAT 2270	Calculus & Analytic Geometry I	5
SOC 1101	Introduction to Sociology	3
Total		16



BUSINESS Transfer

University Parallel

The Business Transfer Pathway is designed for the student who wants to pursue a baccalaureate degree at a four-year institution in a business discipline. The purpose of the pathway is to provide the basic core of business and general education of a four-year program. Students who take courses within this pathway would major in Business Administration, completing the initial courses needed for a Bachelor's in Business (Accounting, Finance, Marketing, etc).

BUSINESS TRANSFER PATHWAY

FIRST SEMESTER

Course Number	Course Name	Credit Hours
ENG 1101	English Composition I	3
MAT 2160	Calculus for Business & Economics	5
MAN 1107	Foundations of Business	3
ECO 2180	Principles of Microeconomics	3
Total		14

Course Number	Course Name	Credit Hours
ENG 1201*	English Composition II	3
BIS 1120	Introduction to Software Applications	3
ACC 1210	Introduction to Financial Accounting	3
HIS 1111*	Western Civilization I	3
MAN 2150	Management & Organizational Behavior	3
Total		15

*Other course options are available to satisfy this requirement.

BUSINESS Career

The Business Career Pathway is designed for the student who plans to enter the workforce after obtaining an associate's degree. The Business Career Pathway emphasizes preparation for a wide variety of management-related positions. Opportunities for managers include supervision, office managers, management trainees, assistant managers and owners within a variety of settings, including small and medium-size businesses, corporations, industries, non-profit organizations and governmental agencies.

BUSINESS CAREER PATHWAY

FIRST SEMESTER

Course Number	Course Name	Credit Hours
ENG 1101	English Composition I	3
HIS 1111	Western Civilization I	3
MAN 1107	Foundations of Business	3
ACC 1100	Small Business Accounting	3
Total		12

SECOND SEMESTER

Course Number	Course Name	Credit Hours
LAW 1101	Business Law	3
ECO 2180	Principles of Microeconomics	3
BIS 1120	Introduction to Software Applications	3
MAN 2101	Introduction to Supervision	3
MAN 2150	Management & Organizational Behavior	3
Total		15



ENGINEERING Transfer

University Parallel

The Engineering Transfer Pathway is designed for the student who plans to transfer to a four-year college or university for a degree in Engineering. Students who take courses within this pathway would major in Engineering transfer, completing the initial courses needed for a Bachelor's in Engineering (Electrical, Mechanical, Computer, etc). The student is strongly advised to consult the particular school he or she will be entering as well as a Sinclair academic adviser, before selecting different courses.

ENGINEERING TRANSFER PATHWAY

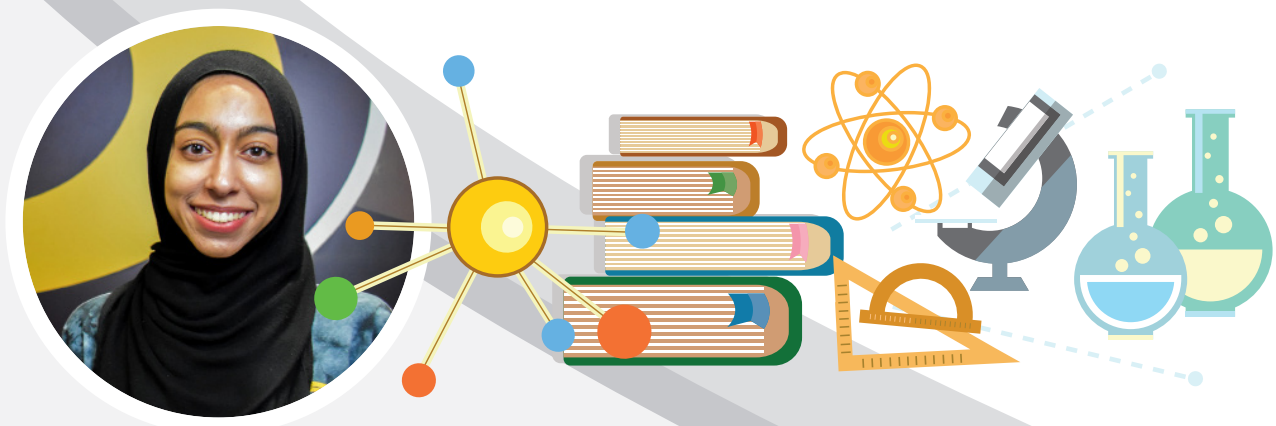
FIRST SEMESTER			SECOND SEMESTER		
Course Number	Course Name	Credit Hours	Course Number	Course Name	Credit Hours
ENG 1101	English Composition I	3	MAT 2280	Calculus & Analytical Geometry II	5
HIS 1112	Western Civilization II	3	PSY 1100	General Psychology	3
MAT 2270	Calculus & Analytical Geometry I	5	PHY 2201/2207	General Physics I	5
CHE 1211/1251	General Chemistry I	5	ART 1110	Art, Music or Theatre	
			MUS 1121	Appreciation	3
			THE 1101		
	Total	16		Total	16

ENGINEERING Technology Career

The Engineering Technology Pathway is designed for the student who plans to enter the workforce after obtaining an associate's degree. The Engineering Technology Pathway aligns with degrees such as mechanical, environmental, electronics, etc. Students interested in the Engineering Technology Pathway should meet with an academic advisor to select appropriate courses.

ENGINEERING TECHNOLOGY CAREER PATHWAY

FIRST SEMESTER			SECOND SEMESTER		
Course Number	Course Name	Credit Hours	Course Number	Course Name	Credit Hours
ENG 1101	English Composition I	3	PLS 1120	American Federal Government	3
MAT 1580	Pre-Calculus	5	COM 2211	Effective Public Speaking	3
			Elective	Engineering Technology Elective	3
	Total	8		Total	9



COMPUTER INFORMATION SYSTEMS Career

The Computer Information Systems (CIS) Career Pathway is designed for students who plan to enter the workforce after obtaining an associate's degree. The CIS Pathway is the ideal preparation for careers in the rapidly expanding Information Technology. The CIS program emphasizes state-of-the-art technology along with the most popular programming languages and software. The program uses leading edge, competency based models designed to build critical skills to compete in the job market.

COMPUTER INFORMATION SYSTEMS CAREER PATHWAY

FIRST SEMESTER

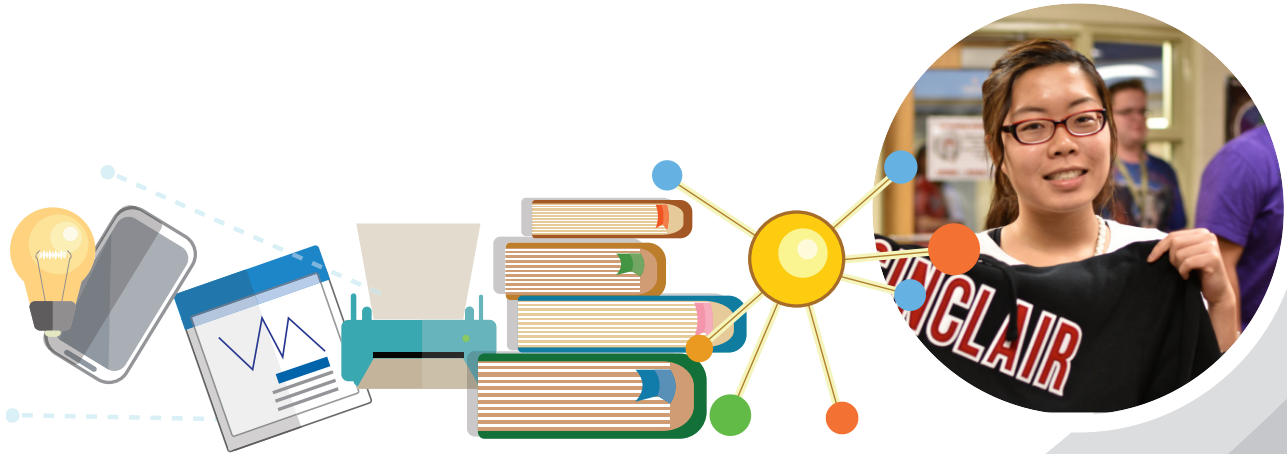
Course Number	Course Name	Credit Hours
ENG 1101	English Composition I	3
BIS 1120	Introduction to Software Applications	3
CIS 1107	Introduction to Operating Systems	3
MAT 1120*	Business Mathematics	3
CIS 1111	Introduction to Problem Solving and Computer Programming	3
Total		15

*Any Ohio Transfer Module (OTM) Math course will also satisfy this requirement

SECOND SEMESTER

Course Number	Course Name	Credit Hours
CIS 1130	Network Fundamentals	3
COM 2225	Small Group Communication	3
MAN 2150	Management and Organizational Behavior	3
ECO 2160	Principles of Macroeconomics	3
Total		12

*CIS 1141 should be substituted for CIS 1130 for Computer Information Systems/ Network Engineering NEEN.AAS.



HEALTH SCIENCE Career

The Health Science Career Pathway is designed for the student who plans to pursue a Health Sciences program at Sinclair. Any student interested in pursuing a Health Sciences program must meet with an academic advisor to declare a program and discuss admissions requirements. Speaking with an academic advisor after choosing a Health Science program will ensure appropriate course selection.

HEALTH SCIENCE CAREER PATHWAY

FIRST SEMESTER			SECOND SEMESTER		
Course Number	Course Name	Credit Hours	Course Number	Course Name	Credit Hours
BIO 1141/1147	Principles of Anatomy & Physiology I	4	BIO 1242/1248	Principles of Anatomy & Physiology II	4
ENG 1101	English Composition I	3	ALH 1101	Intro to Healthcare Delivery	2
			PSY 1100	General Psychology	3
		Total			Total
		7			9



GET STARTED TODAY!

By working with a Sinclair advisor, you may be able to **EARN A SINCLAIR CERTIFICATE OR DEGREE** while you're **EARNING YOUR HIGH SCHOOL DIPLOMA**. Make an appointment with an advisor to create a plan for the school year!

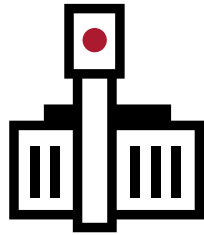
Schedule an appointment by calling (937) 512-3700 or visit my.sinclair.edu: click on *my college*, next click *my service*, select *academic advising* and then select *schedule an appointment with my advisor*.

START AT SINCLAIR, GO ANYWHERE!

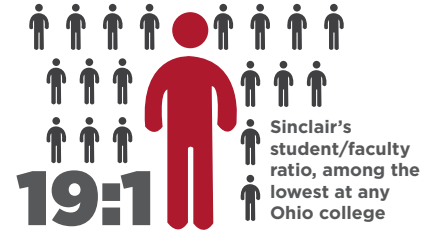
With flexible class schedules, over 240 academic programs, and regional locations throughout Southwest Ohio and online, Sinclair is ready to help you reach your goals.

Helping students achieve their dreams and goals since

1887



\$150 MILLION
Sinclair's capital investment in its Dayton campus in the past ten years. The next five years is expected to add another \$80 million.



1000+
classes in flexible online format



OVER 240
DEGREE & CERTIFICATE PROGRAMS

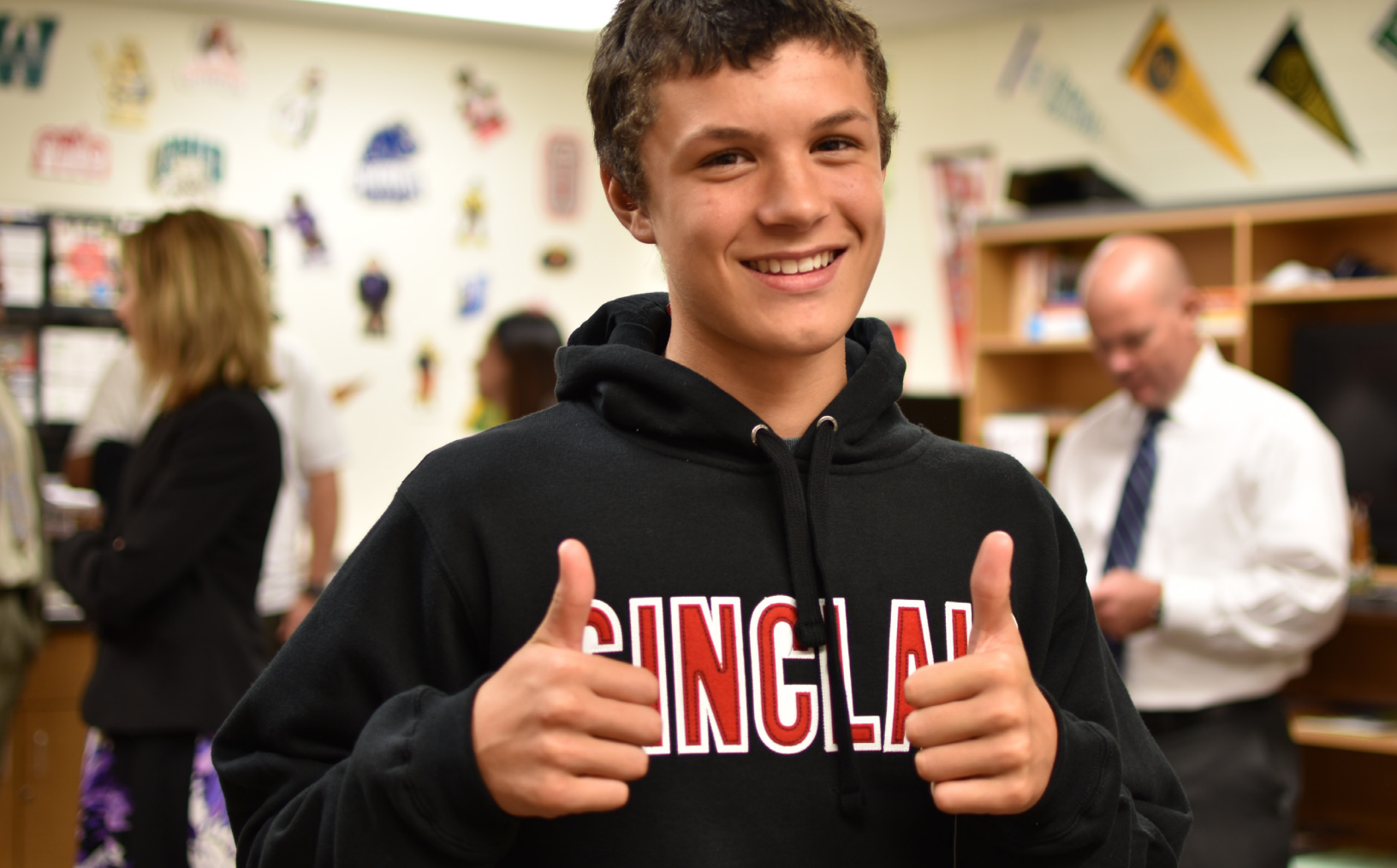


5
LOCATIONS



MORE THAN 100
UNIVERSITY TRANSFER AGREEMENTS





UNDERSTANDING TRANSFER

- Sinclair has over 100 transfer agreements and partners with over 20 universities to provide guaranteed transfer of courses and degrees.
- Sinclair has two unique program partnerships that offer students benefits beyond the guarantee of transfer credit.

The Wright Path Program: www.wright.edu/wrightpath

The UD Sinclair Academy: www.udayton.edu/academy



TOP COLLEGES POST-HIGH SCHOOL

Students who take CCP courses at Sinclair, continue their education post-high school at a college or university. These are the top institutions that Sinclair CCP students attend post-high school:

Sinclair Community College

Miami University

Wright State University

University of Cincinnati (including branch locations)

The Ohio State University (Including branch locations)

University of Dayton



To learn more about transfer please visit our website, www.sinclair.edu/transfer



University of Dayton

Ashli Garnett started at Sinclair through the College Credit Plus (CCP) program and recently graduated with her Associate's Degree in Liberal Arts before she was even done with high school! She will be transferring to Southern University at New Orleans and hopes to earn her masters by the time she is 22!



Blake Swoll started at Sinclair through the College Credit Plus program taking courses at both Sinclair and at Franklin High School as a freshman. He graduated May 2019 with his Associate of Science Degree, even before he finished high school. He will be transferring to The Ohio State University and plans to major in Mechanical Engineering.



COLLEGE CREDIT PLUS

(937) 512-5188 | ccplus@sinclair.edu
www.sinclair.edu/ccp

COLLEGE CREDIT PLUS

**(937) 512-5188 | ccplus@sinclair.edu
www.sinclair.edu/ccp**